

Member Categories

Regular members

Companies or Associations engaged in the business of production of resins and its raw materials and additives, processing of food packaging and processing of foods.

Categories of Regular members

- Synthetic resin production and handling
- Additives and colorant production and handling
- Processing industry
- Food processing
- Distribution and sales
- Association of the above

Associate members

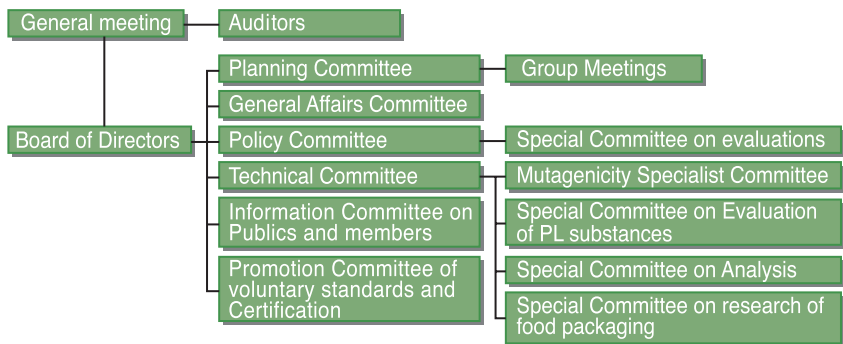
Companies engaged in the business of processing of food packaging, and processing of foods.

Special members

Persons with relevant experience or academic standing, including professors, who assent to the purpose of JHOSPA

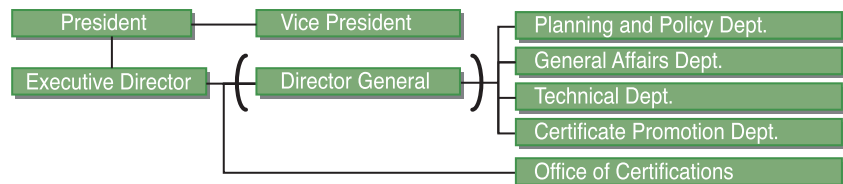
Organization of JHOSPA

Resolution organs



(Reference) Group meetings are held in each of the business groups of resin, processing, additive, colorants, and distribution organized by JHOSPA members. The members can work for each group meeting according to their discretion.

Executive organs



Rights and Obligations of JHOSPA Members

Eligibility for Membership

Any Companies which meets the above member categories can join JHOSPA regardless of nationality. The systems and programs of JHOSPA are applicable only in Japan according to the purpose of JHOSPA. Therefore, any member wishing to use a system or a program of JHOSPA in overseas must comply with the provisions described in “ Utilizing Certificates and Other Documents in Overseas ” on their own responsibility.

Rights of regular members

- Right to file an application for revision of the JHOSPA Standards.
- Right to apply for the issuance of the certificate.
- Right to affix the JHOSPA Seal (PL mark) on the product to which the certificate has been issued.
- Right to participate in the operation and activities of JHOSPA.
- Right to obtain publications of JHOSPA.
- Right to participate in the events of JHOSPA

Duties and Responsibilities of Regular Member

JHOSPA stands on the basis of the mutual trust of its members and on the view that human nature is inherently good. Consequently, every member has the duties and responsibilities for the matters shown on the right and is required to observe them. Be aware that the certificate will be revoked or the relevant member will be expelled from JHOSPA, in the event of violation of these matters.

- Do not make any false representation or violate any of the pledges.
- Do not commit any act that would damage the relation of mutual trust.
- Conduct quality control of items for which the certificate is issued.
- Observe the rules in the systems and programs.
- Every member has the responsibility for using the certificate and PL mark.
- When no specific rules have been established in the JHOSPA Standards, the member must act, observing the spirit and rules of the Food Sanitation Law.
- Foreign companies are requested to appoint a person in Japan who will be responsible for JHOSPA activities.

Notes

Use the Japanese language in all documents and the application forms for JHOSPA.

Official approval for any new membership is given by the Board of Directors. Please note that considerable time will be required for the approval depending on when the member applies for enrollment. Provisional membership system may be granted in case of urgency. Please make an inquiry at the Secretariat.

Resignation

Any member may resign from JHOSPA if desired. Any dues or fees already paid will not be refunded at the time of resignation.

Any member whose company has been dissolved or any member whose dues are in arrears for one year from the date of their billing will be deemed to have resigned from JHOSPA in accordance with the provisions of the Articles of Association.

If any member fails to observe the Articles of Association or perform any act that impinges on the honor of JHOSPA, the member may be dismissed from membership in accordance with the provisions of the Articles of Association.

If a member resigns from JHOSPA, the certificate will become invalid and needs to be returned.



Procedure of Applying for Membership

The form specified in “ the Rules Concerning the Procedure for Applying for Membership ” should be filled out and submitted to the Secretariat to join JHOSPA.
 Admission will be put on the bulletin for members and on the website.
 The procedural flow chart is shown on the right.

